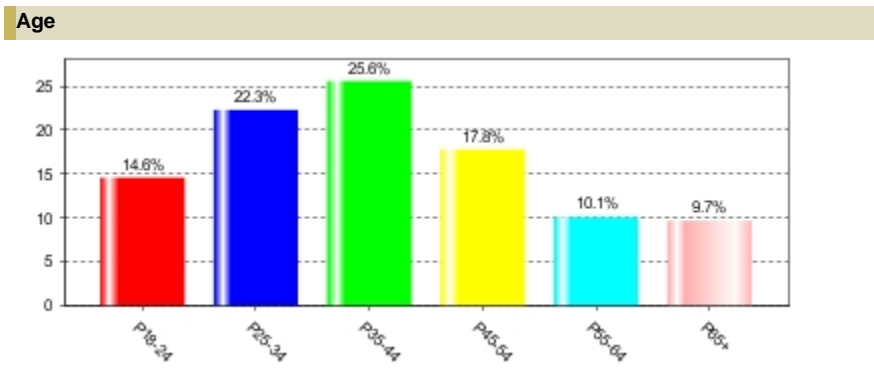
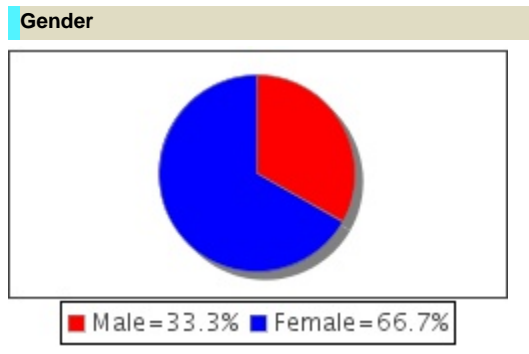


Instant Qualitative Profile

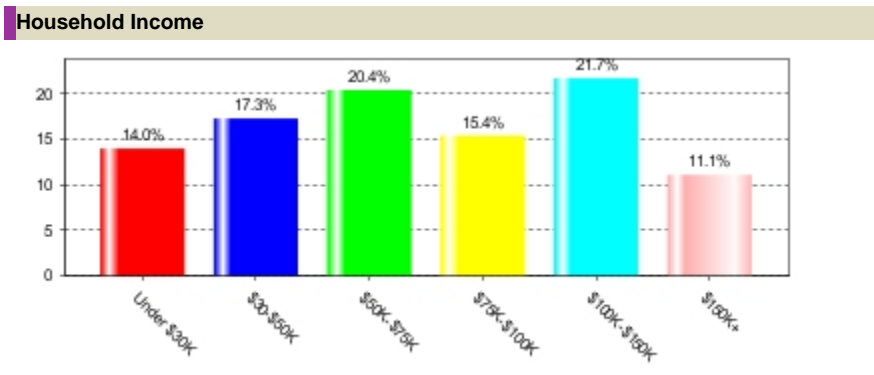


Radio Stations: WMEE-FM
 FT. WAYNE - Metro
 SCB. MID-TIER FALL 2022/SPRING 2023
 Adults 18+



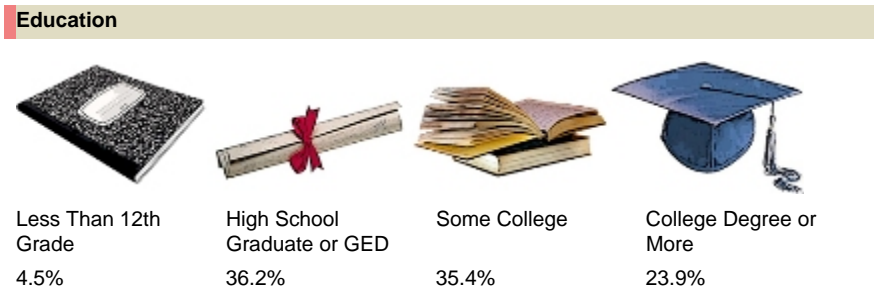
Employment Status

Employed Full-Time	58%
Employed Part-Time	19.2%
Temporarily Not Employed	
A Homemaker	8.5%
A Student	1.7%
Retired	8.1%
Disabled	3%
Temporarily Laid-Off	0%
Not Employed-Looking For Work	1.3%
Other	1.4%



Marital Status

Married	54.8%
Single (Never Married)	27.4%
Widowed	3%
Divorced	13.7%
Separated	1.2%



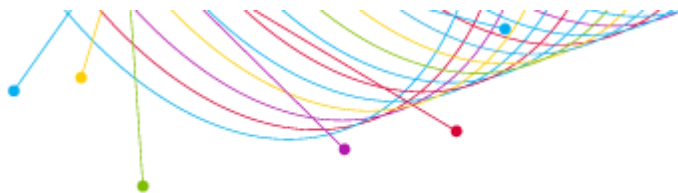
Home Ownership

Own	71.7%
Rent	20.7%
Other	7.6%

Number of Persons in household under 18

None	43.5%
One	22.4%
Two	17.5%
Three or More	16.7%





IQP Detailed Sourcing Summary

Market: FT. WAYNE
Qualitative: SCB. MID-TIER FALL 2022/SPRING 2023
Geography: Metro

Qualitative Demo/Intab/Population:

Age/Gender	Qualitative	Population	Intab
Adults 18+	Radio Stations: WMEE-FM	64,289	272

Additional Notices:

The TAPSCAN Web software product is accredited by the Media Rating Council and reports both accredited and non-accredited data. For a list of the accredited and non-accredited Nielsen radio markets and data available through TAPSCAN, click here:

http://www.arbitron.com/downloads/MRC_Accredited_Services_Markets.pdf